

Clean Room wipes ZimaClean™ RT-2 / RT-20

Product Description

ZimaClean™ RT-2 and RT-20 are clean room wipes made of a strong, tearproof, antistatic, ultra fine synthetic fibre. The cut edges are welded.

ZimaClean™ RT-2 and RT-20 do not produce any dust particles and they are fluff free. Contrary to the usual wipes made of cellulose, polyurethan, polypropylene or similar materials that break because of their short fibre structure and produce dust particles, **ZimaClean™** RT-2 and RT-20 are made of a special structured fibre mixture of 70% Polyester and 30% Nylon. This ultra fine fibre (0,1 mm) does not damage the surface and takes up dust particles very well due to its star-shaped surface structure.

ZimaClean™ RT-2 and RT-20 are produced on a special knitting machine and the compressed to 40 % of their original size using advanced conjugate technology. No binder is used.

After compresssing, **ZimaClean™** RT-2 and RT-20 have a surface area of approximately 25700 cm²/g in contrast to conventional fabrics, which only have a surface area of approximately 2420 cm²/g.

Normal synthetic fibres to not absorb water. **ZimaClean™** RT-2 and RT-20 have a capillary effect due to the fibre structure that takes up water and retains it.

ZimaClean™ RT-2 and RT-20 have high absorbing properties (190 % of their own weight) and is resistant against a number of acids, alkaline solutions, alcohols and solvents. It is not resistant against caustic soda, concentrated nitric acid and concentrated acetic acid.

ZimaClean™ RT-20 is manufactured and packaged under clean room conditions.

ZimaClean™ RT-20 is suitable for use in clean rooms up to grade 100 (< 100 dust particles over 0,5 mm in 1 ft³), RT-2 is not certified for it.

ZimaClean™ RT-2 and Rt-20 are washable and reusable, but will lose their special properties.

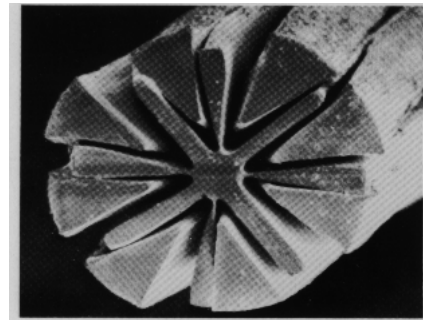
Application

- Cleaning of IC's, semiconductors and other components.
- Cleaning of precision measuring instruments, computers, monitors and other electrical equipment.
- Cleaning of optical equipment such as cameras, lenses or exposure units.
- Cleaning of films and photo tools.

/ RT-20The above statements are based on our present knowledge. Our statements should not be interpreted as a guarantee of characteristics. The use of our products by our customers is subject to different conditions, therefore none of our customers are relieved of the responsibility of testing our products by themselves. A liability for consequential damage will not be accepted in any case. For damage resulting from the use of this information we can only be held responsible if there is evidence of malice or negligence on our part. This data-sheet replaces any previous data sheets.



Structure of the texture surface



Structure of the synthetic fibre

Technical Data

Weight:	160-165 g/m ²
Format:	40 x 40 cm
Thickness:	ca. 0,4 mm

Delivery Size

RT-2: Package with 20 wipes, size 40 x 40 cm

RT-20: Package with 10 wipes, size 40 x 40 cm

Special sizes on request.

General safety information

- Only use the product for applications described in the product data sheet
- The product is intended for industrial use only
- The product is not suitable for food industry
- In case of fire noxious fumes or smoke can be generated